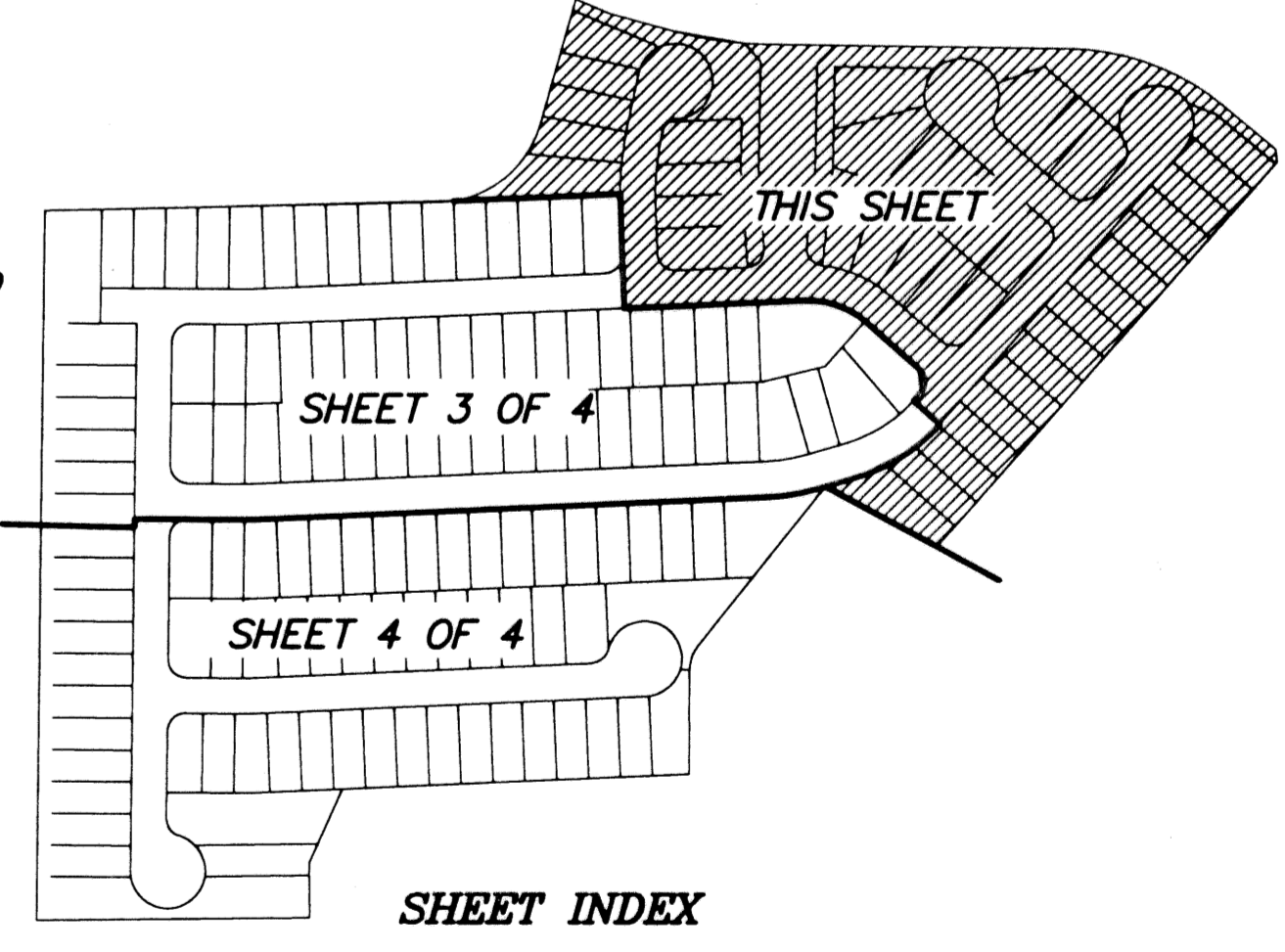
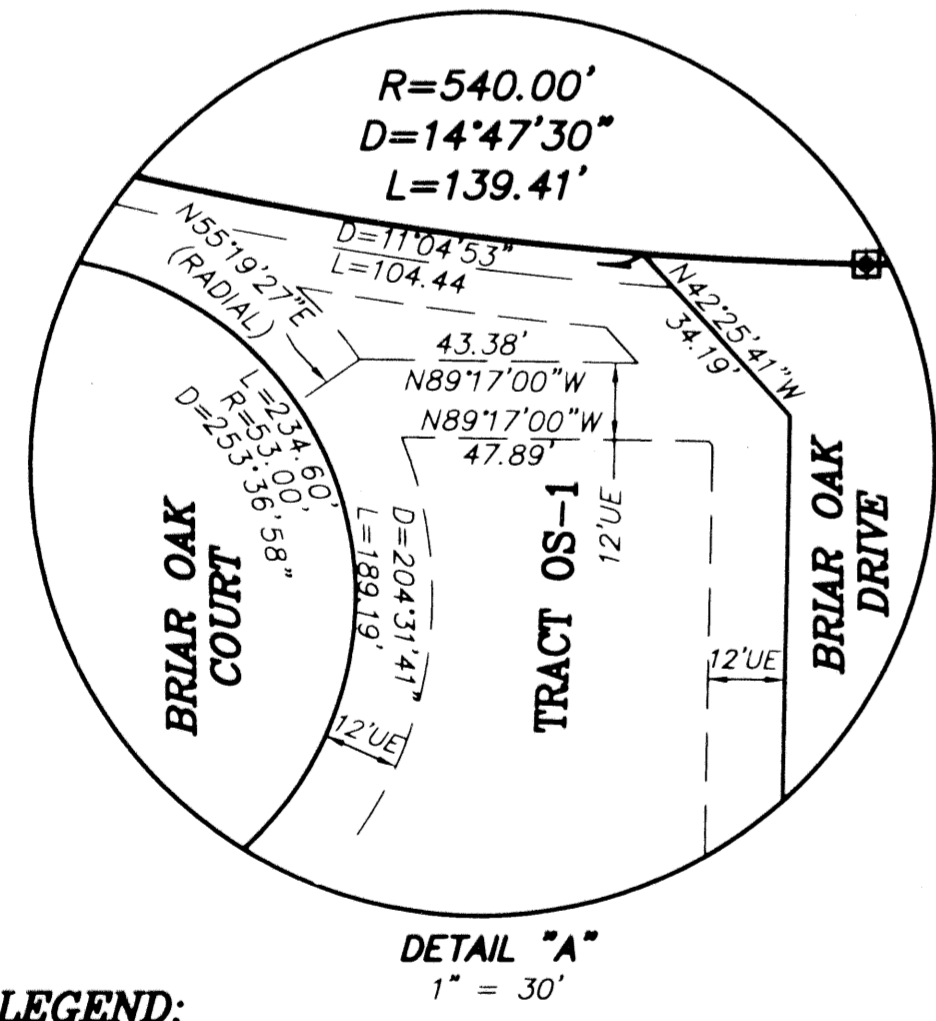
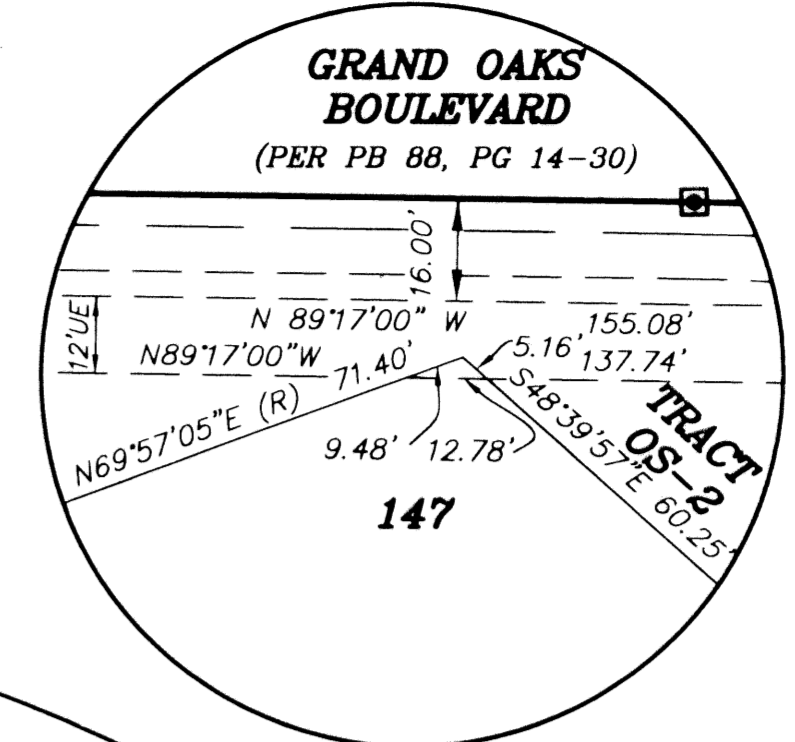
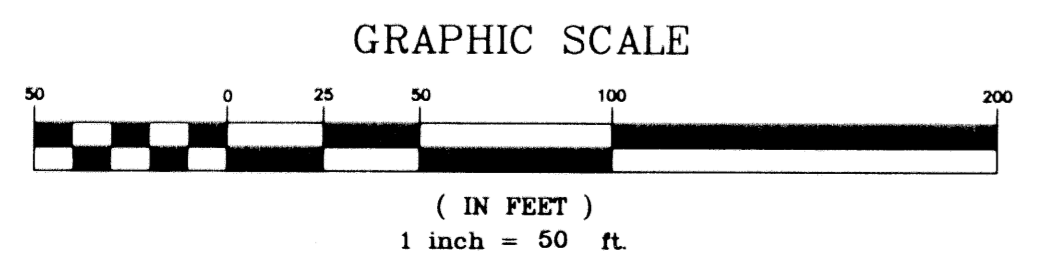


MADISON GREEN-PLAT No. 1, PARCEL "B" REPLAT
 BEING A REPLAT OF ALL OF PARCEL "B" AS SHOWN ON MADISON GREEN -
 PLAT No. 1, AS RECORDED IN PLAT BOOK 88, PAGES 14 THROUGH 30 OF THE
 PUBLIC RECORDS OF PALM BEACH COUNTY FLORIDA, IN SECTION 22, TOWNSHIP 43 SOUTH,
 RANGE 41 EAST VILLAGE OF ROYAL PALM BEACH, PALM BEACH COUNTY, FLORIDA
 APRIL 2001
 SHEET 2 OF 4



- LEGEND:**
- D= DELTA (CENTRAL ANGLE)
 - L= LENGTH
 - R= RADIUS
 - CB= CHORD BEARING
 - CD= CHORD DISTANCE
 - PSM= PROFESSIONAL SURVEYOR AND MAPPER
 - PLS= PROFESSIONAL LAND SURVEYOR
 - LAE= LIMITED ACCESS EASEMENT
 - MREE= MAINTENANCE ROOF AND EAVES EASEMENT
 - UE= UTILITY EASEMENT
 - DE= DRAINAGE EASEMENT
 - P.B.= PLAT BOOK
 - PG.= PAGE
 - (R)= RADIAL
 - ☐= PERMANENT REFERENCE MONUMENT "LB 4318" (UNLESS OTHERWISE NOTED)
 - = PERMANENT CONTROL POINT "LB 4318"
 - PBAE= PEDESTRIAN AND BICYCLE ACCESS EASEMENT



CURVE TABLE

CURVE	DELTA	LENGTH	RADIUS	CHORD BEARING	CHORD DISTANCE
C1	14°19'59"	112.57'	450.00'	S04°36'19" W	112.28'
C2	43°53'43"	114.92'	150.00'	N70°36'48" W	112.13'
C5	86°43'18"	37.84'	25.00'		
C6	84°37'02"	36.92'	25.00'		

MADISON GREEN-PLAT No. 1 PARCEL "B" - REPLAT

NICK MILLER, INC.
 Surveying & Mapping Consultants

SUITE 105
 2560 RCA BLVD.
 PALM BEACH GARDENS, FLORIDA 33410
 TEL 561 627-5200 FAX 561 627-0983
 D.B.P.R. LICENSED BUSINESS No. 4318

SHEET NO. **2** SCALE: 1" = 50'

DATE: APRIL 2001
 JOB NO. 99043AB
 FILE: SHEET 2.DWG